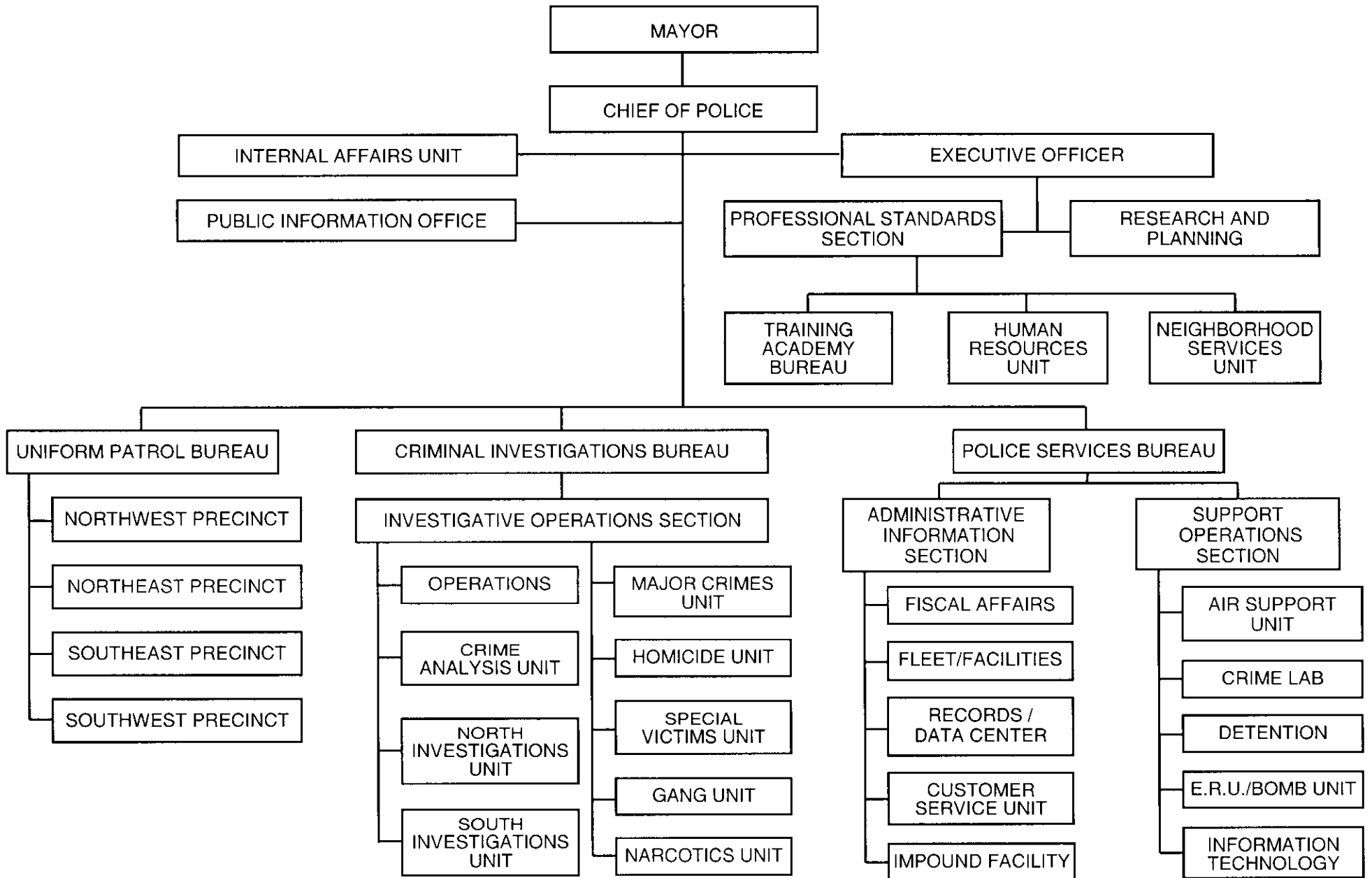


**POLICE DEPARTMENT**



# **City of Omaha Police Department**

## **Mission Statement**

The Omaha Police Department, in partnership with our community, provides impartial, ethical and professional law enforcement services and protection. We strive to maintain the trust and confidence of our citizens while working to improve the quality of life.

## **Goals and Objectives**

1. Reduction of crime and fear of crime.
2. Maximize efficiency.
3. Enhanced customer service.
4. Improved public confidence.
5. Personal and professional growth for employees.

**City of Omaha**  
**2011 Police Department Budget**  
**Appropriated Summary**

By Division	Positions		Funding		
	2010	2011	2010 Appropriated	2011 Recommended	2011 Appropriated
Office of the Police Chief	-	21	2,387,123	2,794,839	-
Criminal Investigations Bureau	-	208	22,197,633	23,561,955	-
Executive Officer Bureau	-	67	5,754,889	5,807,093	-
Police Services Bureau	-	146	16,820,641	20,619,324	-
Uniform Patrol Bureau	-	551	51,604,766	53,996,034	-
<b>Total</b>	<b>998</b>	<b>993</b>	<b>98,765,052</b>	<b>106,779,245</b>	<b>-</b>
<b>By Expenditures Category</b>					
Employee Compensation			88,943,719	93,370,549	-
Non-Personal Services			9,821,333	13,183,696	-
Capital			-	225,000	-
<b>Total</b>			<b>98,765,052</b>	<b>106,779,245</b>	<b>-</b>
<b>By Source of Funds</b>					
General			98,289,052	106,078,245	-
Keno/Lottery Proceeds			476,000	476,000	-
2010 Public Facilities			-	225,000	-
<b>Total</b>			<b>98,765,052</b>	<b>106,779,245</b>	<b>-</b>

## Expenditure Summary by Organization

Department	Police		
Division	Office of the Police Chief	Division No	111000

Organization Description and Major Object Summary	Comparative Budget Appropriations			
	2009 Expended	2010 Appropriated	2011 Recommended	2011 Appropriated

**Chief Administrative Functions**      **111111**

The Chief of Police commands the overall operations of the department and receives support from the Internal Affairs Unit and the Police Information Officer. The Chief of Police has the responsibility of determining department policies and for ensuring the complete discharge of all duties imposed upon him. The Chief of Police is a Department Head under Sections 3.07 and 3.11 of the Omaha Charter and reports directly to the Mayor.

**Internal Affairs**

The Internal Affairs unit reports directly to the Chief of Police and investigates citizen and internal complaints.

**Public Information Office**

The Public Information Office coordinates dissemination of information to the news media and manages the Crime Stoppers Program.

Employee Compensation	1,893,052	2,147,123	2,269,939	-
Non-Personal Services	259,962	240,000	299,900	-
<b>Organization Total</b>	<b>2,153,014</b>	<b>2,387,123</b>	<b>2,569,839</b>	<b>-</b>

**Police Capital**      **131592**

Non-Personal Services	14,417	-	-	-
Capital	3,817	-	225,000	-
<b>Organization Total</b>	<b>18,234</b>	<b>-</b>	<b>225,000</b>	<b>-</b>

<b>Division Total</b>	<b>2,171,248</b>	<b>2,387,123</b>	<b>2,794,839</b>	<b>-</b>
-----------------------	------------------	------------------	------------------	----------

## Expenditure Summary by Organization

Department	Police		
Division	Criminal Investigations Bureau	Division No	111500

Organization Description and Major Object Summary	Comparative Budget Appropriations			
	2009 Expended	2010 Appropriated	2011 Recommended	2011 Appropriated

**CIB Administrative Functions**      **114231**

The Investigative Operations Section is comprised of the Crime Analysis Unit, North and South Investigations Units, Major Crimes Unit, Homicide Unit, Special Victims Unit, Gang Unit and Narcotics Unit.

**SOS Administrative Functions**

Provides 24-hour services to police field operations and consists of the Crime Lab and Emergency Response Unit (ERU)/Bomb Unit. A Captain commands this Section.

**Crime Lab**

Provides evidence collection and preservation support to police field operations. The Crime Lab includes the Evidence/Property Unit.

The 2011 equipment of \$1,000 is for crime lab equipment.

**E.R.U. /Bomb Unit**

Provides services requiring special equipment, weapons, tactics and training. This unit is deployed for hostage/barricade situations, high-risk warrant service and dignitary protection. The Bomb Response Team handles all called-for-services involving actual or suspected explosive devices.

**Major Crimes Unit**

Field Investigation and the Fraud Squad are under the Major Crimes Unit.

**Homicide Unit**

The Homicide Unit is commanded by a Lieutenant and investigates all criminal homicides, as well as felony assaults. The Homicide Unit also maintains a cold-case file of unsolved homicides requiring additional information.

**Special Victims Unit**

The Special Victims Unit is comprised of the Child Victim/Sexual Assault Squad, the Domestic Violence Squad and provides services to victims through the Victim/Assistance Squad.

**Gang Unit**

The Gang Unit is comprised of North and South Gang Suppression Squads, Gang Intelligence Squad and the Fugitive Squad.

**Narcotics Unit**

The Narcotics Unit conducts specialized investigations. The Unit is comprised of the Narcotics Squad, Intelligence Squad and Special Operations/Vice Squad.

**Crime Analysis Unit**

The Crime Analysis Unit provides crime data and trends to Investigative Operations and provides crime data for weekly CompStat meetings. The Pawn/Administrative Unit falls under the Crime Analysis Unit.

**North/South Investigations Unit**

These units investigate crimes such as robbery, burglary, auto thefts and assaults occurring in the Northeast and Southeast Precincts in Omaha.

Employee Compensation	21,097,066	21,857,383	23,266,305	-
Non-Personal Services	3,537,415	340,250	295,650	-
<b>Organization Total</b>	<b>24,634,481</b>	<b>22,197,633</b>	<b>23,561,955</b>	<b>-</b>
<b>Division Total</b>	<b>24,634,481</b>	<b>22,197,633</b>	<b>23,561,955</b>	<b>-</b>

## Expenditure Summary by Organization

Department	Police			
Division	Executive Officer Bureau	Division No	112000	

Organization Description and Major Object Summary	Comparative Budget Appropriations			
	2009 Expended	2010 Appropriated	2011 Recommended	2011 Appropriated

**Exec Officer Admin Function      112111**

The Office of the Executive Officer is a Bureau of the Office of the Police Chief. The Executive Officer serves as the Administrative Assistant to the Chief of Police. The Executive Officer manages the Professional Standards Section, Research and Planning, Neighborhood Services Unit, Human Resources Unit and the Training Academy. A Deputy Chief commands this Bureau.

**Prof Stand Section Admin Functions**

The Professional Standards Section is responsible for duties assigned by the Executive Officer. The Training Academy, Neighborhood Services Unit and Human Resources Unit fall under the Professional Standards Section. A Captain commands the Professional Standards Section.

**Neighborhood Services Unit**

The Neighborhood Services Unit provides assistance to the public on problem resolution and prevention programs. The Neighborhood Services Unit is comprised of the Crime Prevention Squad/Community Resource Center, the Business Watch/Closed Property Office, the Nuisance Task Force, the School Resource Officer Program and Volunteer Services.

**Background/Inspections Squad**

The Background/Inspections Squad is responsible for conducting all background checks for recruits and civilian employees.

**Training Academy**

The Training Academy provides both a basic Recruit Academy for new recruit officers and maintains continuing courses for all sworn officers. The Academy also coordinates all training for non-sworn members of the Department.

**Research & Planning**

Research and Planning provides a variety of services which includes conducting research and planning projects for the Chief of Police and other Deputy Chiefs as requested. Research and Planning is responsible for updating the Standard Operating Procedures of the Department, the compilation of the annual report, the coordination of the accreditation process, grant management and the drafting of general orders.

Employee Compensation	5,861,961	5,117,039	5,173,443	-
Non-Personal Services	150,251	637,850	633,650	-
<b>Organization Total</b>	<b>6,012,212</b>	<b>5,754,889</b>	<b>5,807,093</b>	<b>-</b>

<b>Division Total</b>	<b>6,012,212</b>	<b>5,754,889</b>	<b>5,807,093</b>	<b>-</b>
-----------------------	------------------	------------------	------------------	----------

## Expenditure Summary by Organization

Department	Police		
Division	Police Services Bureau	Division No	113000

Organization Description and Major Object Summary	Comparative Budget Appropriations			
	2009 Expended	2010 Appropriated	2011 Recommended	2011 Appropriated

### **PSB Admin Functions** **113111**

The Police Services Bureau provides support services to the Office of the Police Chief, Executive Officer, Uniform Patrol and Criminal Investigation Bureaus. A Deputy Chief commands this Bureau. The Bureau is comprised of the Administrative Information Section, Information Technology, and the Support Operations Section.

#### **Human Resources Unit**

The Human Resources Unit conducts recruitment and selection activities and maintains personnel and timekeeping information for all Department employees. The unit is comprised of the Personnel/Timekeeping Squad.

#### **AIS Administrative Functions**

Provides specialized support services to the Department. It consists of the Customer Services Unit, Fiscal Affairs Risk Management Unit, Fleet/Facilities, Records/Data Center, and the Vehicle Impound Facility. A Captain commands this Section.

#### **Data Center**

Maintains the central records system which includes scanning, filing and distribution of reports. The Data Center provides information via radio to Police Officers and is responsible for entering crime data and National Crime Information Center information. The Administrative Information Manager supervises the Records/Data Center and Telephone Report Squad.

#### **Fiscal Affairs Administrative Funct**

The Fiscal Affairs/Risk Management Unit is responsible for monitoring Departmental expenditures and for managing the fiscal affairs of the Department through the annual strategic budgeting processes. The Unit is also assigned tasks by the Chief of Police to analyze and minimize organizational risk. The Unit includes a Risk Management Sergeant and Police Supply. A Lieutenant commands this Unit.

The 2011 equipment of \$18,000 is for radio communication equipment.

#### **Fleet/Facilities**

Procures, services and maintains the Department's vehicle fleet and facilities.

The 2011 equipment for this division consists of \$5,000 for replacement office furniture, \$20,000 for replacement and additional security equipment, \$130,000 for cruiser cameras and \$1,578,720 for police cruisers.

#### **Vehicle Impound Lot Police**

Provides for towing and disposal of abandoned and wrecked vehicles. After a brief holding period, unclaimed vehicles are auctioned to private entities. A private towing company handles all towing services for violations reported by the Police Department.

#### **Customer Service Unit**

Provides a variety of services and support functions to include the receiving and processing of incoming telephone calls, walk-in reports and inquiries from the public. The Customer Services Unit is comprised of the Front Desk Squad, Information Services Squad, and Court Liaison Squad.

#### **Air Support Unit**

Provides aerial surveillance in support of Uniform Patrol and Criminal Investigations Bureaus. The use of aircraft provides a hastened response time and a powerful level of observation that is enhanced by thermal imaging capability.

#### **Information Technology**

Maintains the Department's information technology systems.

The 2011 equipment of \$160,800 for computers and accessories, as well as replacement office equipment.

Employee Compensation	8,903,675	8,423,731	8,926,200	-
Non-Personal Services	3,645,186	8,396,910	11,693,124	-
<b>Organization Total</b>	<b>12,548,861</b>	<b>16,820,641</b>	<b>20,619,324</b>	<b>-</b>

## Expenditure Summary by Organization

Department	Police			
Division	Police Services Bureau		Division No	113000
	Comparative Budget Appropriations			
Organization Description and Major Object Summary	2009 Expended	2010 Appropriated	2011 Recommended	2011 Appropriated
<b>Division Total</b>	<b>12,548,861</b>	<b>16,820,641</b>	<b>20,619,324</b>	<b>-</b>

## Expenditure Summary by Organization

Department	Police		
Division	Uniform Patrol Bureau	Division No	114200

Organization Description and Major Object Summary	Comparative Budget Appropriations			
	2009 Expended	2010 Appropriated	2011 Recommended	2011 Appropriated

**UPB Administrative Functions** 114211

The City of Omaha is divided into four Uniform Patrol Precincts: Northeast, Southeast, Northwest and Southwest. The Southwest precinct is comprised of the Traffic Unit, Accident Investigation Unit, Selective Enforcement Squad and Canine Squad. Mounted Patrol and Riverfront Patrol have been assigned to the Southeast Precinct. A Captain commands each precinct and a Deputy Chief commands the Bureau.

The 2011 equipment of \$5,000 includes traffic enforcement equipment.

**Southwest Precinct Admin Functions**

The 2011 equipment of \$3,150 includes traffic enforcement equipment.

Employee Compensation	46,865,754	51,398,443	53,734,662	-
Non-Personal Services	1,389,141	206,323	261,372	-
<b>Organization Total</b>	<b>48,254,895</b>	<b>51,604,766</b>	<b>53,996,034</b>	-
<b>Division Total</b>	<b>48,254,895</b>	<b>51,604,766</b>	<b>53,996,034</b>	-

## Performance Summary By Division

Department	Police		
Division	Office of the Police Chief	Division No	110000
Performance Measures	2009 Actual	2010 Planned	2011 Goal
<u>Air Wing</u>			
Assists per Flight Hour	1.06	1.7	1.2
<u>Clearance of Part I Crimes</u>			
Aggravated Assault	61%	60%	60%
Burglary	11%	15%	15%
Criminal Homicide	50%	60%	60%
Forcible Rape	47%	45%	45%
Larceny - Theft	32%	30%	30%
Motor Vehicle Theft	19%	25%	25%
Robbery	32%	35%	35%
<u>Crime Lab</u>			
Latent Prints Identified/Latent Prints Developed	29%	35%	38%
Pieces of Evidence Processed per Year	40,000	41,000	42,000
<u>Injured on Duty (IOD)/Sick leave Tracking</u>			
% of Authorized Sworn Officers Available for Normal Duty	96.6%	97%	97%
Number of IOD Officers per Sworn Staff	28	24	28
<u>Problem-Oriented Community Policing</u>			
Calls for Service per Day	648	620	650
Community Precinct Meetings per Precinct	132	165	170
Officer initiated Traffic Stops	45,368	40,000	40,000
Student Resource Officers Assists to Detectives	293	650	650
<u>Response to Priority 1 Citizen Calls</u>			
Average Response Time	0:06:28	0:06:20	0:06:20
<u>Telephone Response Unit (TRS)</u>			
% of Low Priority Calls Received by 911 and Diverted to TRS	12%	9%	12%
Reports Taken per Police Information Officer 1	1,977	675	1,975
Time per Report	57 min.	58 min.	57 min.
Program Outputs	2009 Actual	2010 Planned	2011 Goal
*****These Performance Measures will end in 2010.			
****Multiple services are performed per request.			
****Totals don't include Integrated Ballistics Identification Systems stats.			
***Data from Crime Lab only and based on a fully staffed Crime Lab Unit.			
**Charges that formerly were on individual traffic citations			
**may now be included on bookings and criminal citations.			
*Includes bookings, criminal citations and juvenile street			
*releases for all criminal and traffic offenses.			
Calls for Service	236,670	232,000	233,000
Crime Scene Investigations***	4,407	4,600	5,000
DUI Breath Tests***	2,101	2,200	2,700
Evidence Photographs***	100,745	87,000	90,000
Felony Drug Arrest Charges*****	848	890	-
Fingerprint Comparison Requests***	2,780	2,000	2,500
Firearms Examinations*****	1,740	2,500	3,000

## Performance Summary By Division

Department	Police		
Division	Office of the Police Chief	Division No	110000
<b>Program Outputs</b>	<b>2009 Actual</b>	<b>2010 Planned</b>	<b>2011 Goal</b>
Identification Checks***	46	100	100
Incidents of Arrests*	25,009	33,000	26,000
Number of Recruits	0	24	48
<u>Seizure of Drugs</u>			
Cocaine*****	2,449 gms	3,310 gms	-
Crack Cocaine*****	680 gms	1,050 gms	-
Marijuana*****	286,500 lbs	2,000 lbs	-
Methamphetamine*****	21,770 gms	30,000 gms	-
<u>Traffic Citations**</u>			
Moving	24,409	21,000	24,000

## Division Summary of Personal Services

Department Police  
 Division Police Sworn Department No 110000

### Comparative Budget Appropriations

Class Title	Pay Range	Comparative Budget Appropriations					
		2009 Actual	2010 Auth.	2011 Recommended	2011 Appropriated		
Police Chief	7 MP	1	1	1	130,658	-	-
Deputy Police Chief	1 MP	3	4	4	451,106	-	-
Police Captain	11 UP	7	8	9	820,590	-	-
Police Lieutenant	9 UP	31	31	31	2,453,858	-	-
Police Sergeant	7 UP	105	105	105	7,458,024	-	-
Police Officer	3 UP	618	671	620	36,358,550	-	-
Police Officer	1 UP	-	-	50	2,281,629	-	-
Part-Time and Seasonal					196,475		
Overtime					2,162,784		
Longevity					1,084,478		
Reimbursements					513,410		
College Incentive					503,127		
Holiday Pay					924,452		
Court Pay					631,576		
Call In Pay					450,000		
FLSA Pay					59,625		
Annual & Sick Lv Bal Payoff					1,566,649		
Compensated Time Payoff					66,298		
Speciality Pay					862,932		
Other Pay					523,051		
<b>Department Total</b>		<b>765</b>	<b>820</b>	<b>820</b>	<b>59,499,271</b>	<b>-</b>	<b>-</b>

**Explanatory Comments:**

## Division Summary of Personal Services

Department	Police						
Division	Police Civilian			Department No	110000		
Comparative Budget Appropriations							
Class Title	Pay Range	2009 Actual	2010 Auth.	2011 Recommended	2011 Appropriated		
Community Liaison	9521	-	-	1	50,800	-	-
Administrative Information Manager	21.2 MC	1	1	1	76,369	-	-
Research & Planning Supervisor	16.1 MC	-	1	-	-	-	-
Grant Administrator	18.4 MC	-	-	1	56,843	-	-
Crime Laboratory Manager	18.4 MC	-	1	1	56,843	-	-
Applications Analyst	18.3 MC	-	1	1	68,542	-	-
Impound Lot Manager	18.2 MC	1	1	1	69,206	-	-
City Maintenance Supervisor	18.2 MC	1	1	1	67,876	-	-
Office Manager	16.1 MC	2	2	2	118,427	-	-
Crime Analysis Supervisor	16.1 MC	1	1	1	62,906	-	-
Criminalist	15.2 MC	2	3	3	167,918	-	-
Accountant I	14.2 MC	1	1	-	-	-	-
Crime Analyst	14.2 MC	5	5	5	281,969	-	-
Training Specialist - Academy	12.2 MC	-	1	1	43,892	-	-
Research and Planning Specialist	12.1 MC	2	2	2	101,202	-	-
Executive Secretary	11.1 MC	1	1	1	51,377	-	-
Office Supervisor	11.1 MC	1	1	1	50,880	-	-
Fleet and Facilities Coordinator	10.1 MC	1	1	1	49,467	-	-
Crime Prevention Coordinator	16.1 MC	-	1	-	-	-	-
Coordinator of Volunteers	9.1 MC	-	1	1	39,562	-	-
Crime Prevention Specialist	7.1 MC	4	4	4	168,561	-	-
Aviation Mechanic	07135	2	2	2	106,573	-	-
Senior Crime Laboratory Technician	03165	5	8	8	396,614	-	-
Crime Laboratory Technician	03155	9	10	10	481,784	-	-
Storekeeper II	02116	1	1	1	43,659	-	-
Crime Laboratory Trainee	03145	1	6	2	70,138	-	-
Police Information Operator II	00155	5	5	5	199,368	-	-
Police Information Operator I	00150	29	38	38	1,373,374	-	-
Automotive Equipment Operator I	07105	5	5	5	177,590	-	-
Storekeeper I	02115	5	5	5	189,280	-	-
Senior Clerk	00120	1	1	1	36,525	-	-
Secretary I	00135	17	20	20	657,915	-	-
Information Services Technician	00147	10	10	10	344,699	-	-
Clerk Typist II	00130	23	29	29	863,338	-	-
Stablehand	00115	1	1	1	31,845	-	-
Administrative Assistant III	14FC	4	4	4	186,118	-	-
Senior Administrative Clerk	11FC	1	2	2	76,773	-	-
Administrative Assistant I	9FC	1	1	1	37,544	-	-
Part-Time and Seasonal					1,693,131		-
Overtime					190,002		-
Longevity					50,670		-
Attrition					(582,650)		-
Reimbursements					(1,702,901)		-
Holiday Pay					360,004		-
Court Pay					80,972		-

## Division Summary of Personal Services

Department Police  
 Division Police Civilian Department No 110000

### Comparative Budget Appropriations

Class Title	Pay Range	2009 Actual	2010 Auth.	2011 Recommended	2011 Appropriated
<b>Department Total</b>		<b>143</b>	<b>178</b>	<b>173</b>	<b>6,945,005</b>
		<b>-</b>	<b>-</b>	<b>-</b>	<b>-</b>

**Explanatory Comments:**

## Division Summary of Major Object Expenditures

Department	Police			
Division	Police		Department No	110000
	Comparative Budget Appropriations			
Major Object Expenditures	2009 Expended	2010 Appropriated	2011 Recommended	2011 Appropriated
<b>Employee Earnings</b>				
Classified Regular	57,014,306	60,433,682	62,895,722	-
Part-Time and Seasonal	3,983,117	2,566,612	1,889,605	-
Overtime	2,624,100	1,352,780	2,352,786	-
Longevity	595,678	814,428	1,135,148	-
Attrition	-	-	(582,650)	-
Reimbursements	(1,821,526)	(500,665)	(1,189,491)	-
<b>Total Employee Earnings</b>	<b>62,395,675</b>	<b>64,666,837</b>	<b>66,501,120</b>	<b>-</b>
<b>Employee Benefits</b>				
FICA	1,358,251	1,416,986	1,570,517	-
Pension	11,832,643	11,989,494	12,885,794	-
Insurance	10,627,505	12,135,716	13,368,588	-
Reimbursements	(1,592,566)	(1,265,314)	(955,470)	-
<b>Total Employee Benefits</b>	<b>22,225,833</b>	<b>24,276,882</b>	<b>26,869,429</b>	<b>-</b>
<b>Total Employee Compensation</b>	<b>84,621,508</b>	<b>88,943,719</b>	<b>93,370,549</b>	<b>-</b>
<b>Non-Personal Services</b>				
Purchased Services	5,457,287	6,322,383	7,016,298	-
Supplies	2,456,913	939,000	2,977,300	-
Equipment	228,990	1,700,000	1,921,670	-
Other	853,182	859,950	1,268,428	-
<b>Total Non-Personal Services</b>	<b>8,996,372</b>	<b>9,821,333</b>	<b>13,183,696</b>	<b>-</b>
<b>Capital</b>				
	-	-	-	-
Equipment	3,817	-	225,000	-
<b>Total Capital</b>	<b>3,817</b>	<b>-</b>	<b>225,000</b>	<b>-</b>
<b>Department No</b>	<b>93,621,697</b>	<b>98,765,052</b>	<b>106,779,245</b>	<b>-</b>
<b>Source of Funds:</b>				
General (Ref. B-1)	93,603,373	98,289,052	106,078,245	-
Judgment (Ref. B-3)	90	-	-	-
Keno/Lottery Proceeds (Ref. B-10)	-	476,000	476,000	-
1998 Training Facility Constr (Ref. B-29)	18,234	-	-	-
2010 Public Facilities (Ref. B-31-2)	-	-	225,000	-
	<b>93,621,697</b>	<b>98,765,052</b>	<b>106,779,245</b>	<b>-</b>

